

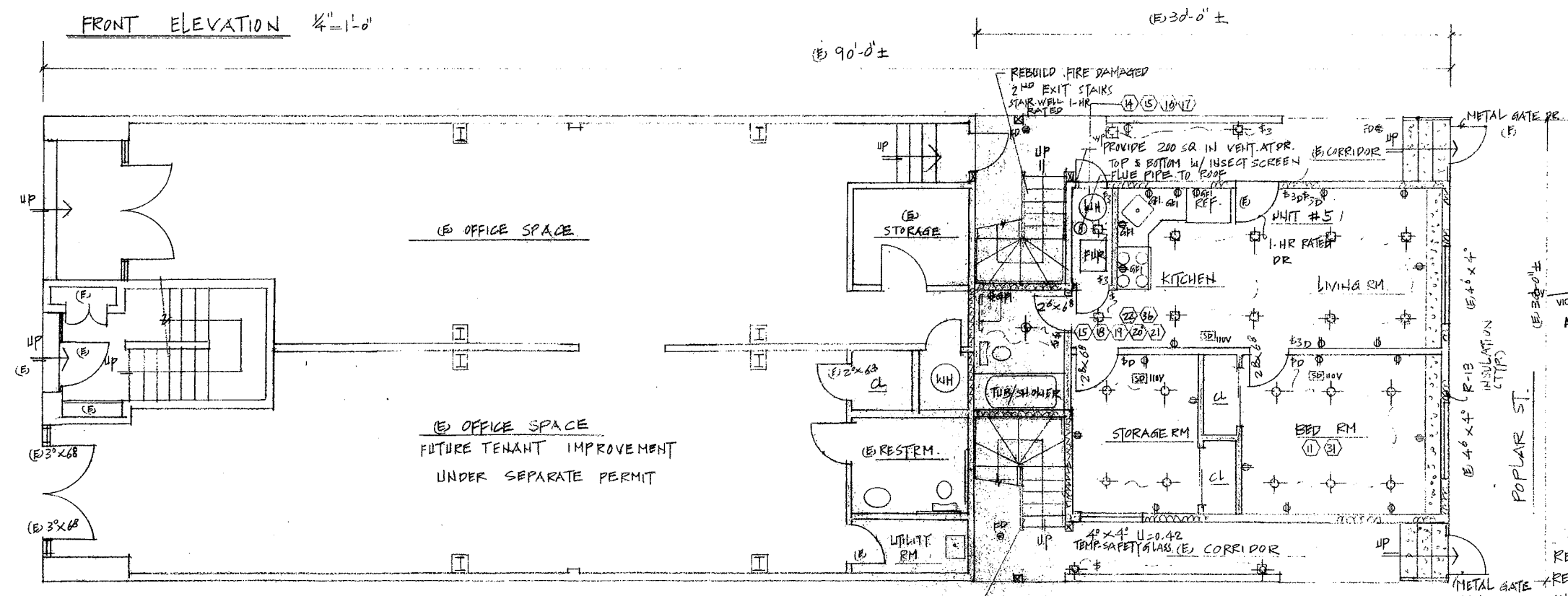
FRONT ELEVATION 1/4"=1'-0"

W/VINYL FRAME WINDOW. SIZE MATCH W/(E) V.I.F.
 REMOVE (E) WINDOWS (E) FINISH TO MATCH W/(E) V.I.F.

APPROVED
 Dept. of Building Insp.
 SEP 24 2008
 ACTING DIRECTOR
 DEPT. OF BUILDING INSPECTION

REVISIONS	BY

PROPOSED FIRST FLOOR PLAN
 1468 - 1472 VALENCIA ST. SF CA
 BLOCK-6531 LOT-13



will
 MEHLIN LUTASVAB, DBI
 AUG 29 2008

VICTOR YEH, DBI
 AUG 29 2008

REVISION RECEIVED
 AUG 08 2008
 DEPT. OF BUILDING INSPECTION
 THIS PLAN MEETS THE QUALITY
 STANDARD FOR MICROFILMING
 ACCEPT

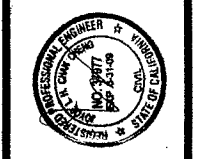
NOTES
 REMOVE ALL INTERIOR GYP. BD.
 REPLACED W/ 5/8" GYP. BD. TYPE X
 INSULATE ALL EXTERIOR WALLS, CEILING
 CHANGE ALL WINDOWS TO DOUBLE
 GLASS WINDOWS. U=0.42. VINYL
 FRAME WINDOWS TEMP. SAFETY
 GLASS. V. I. F.

REBUILD DAMAGED 2ND EXIT STAIRS (STAIR WELL 1-HR. RATED)
 REPLACE EXISTING STAIRS BY PUT BACK
 EXACTLY SAME CONFIGURATION OF EXIST.
 STAIRS WITHOUT HAVING TO COMPLY WITH
 CURRENT CODE (TTP)

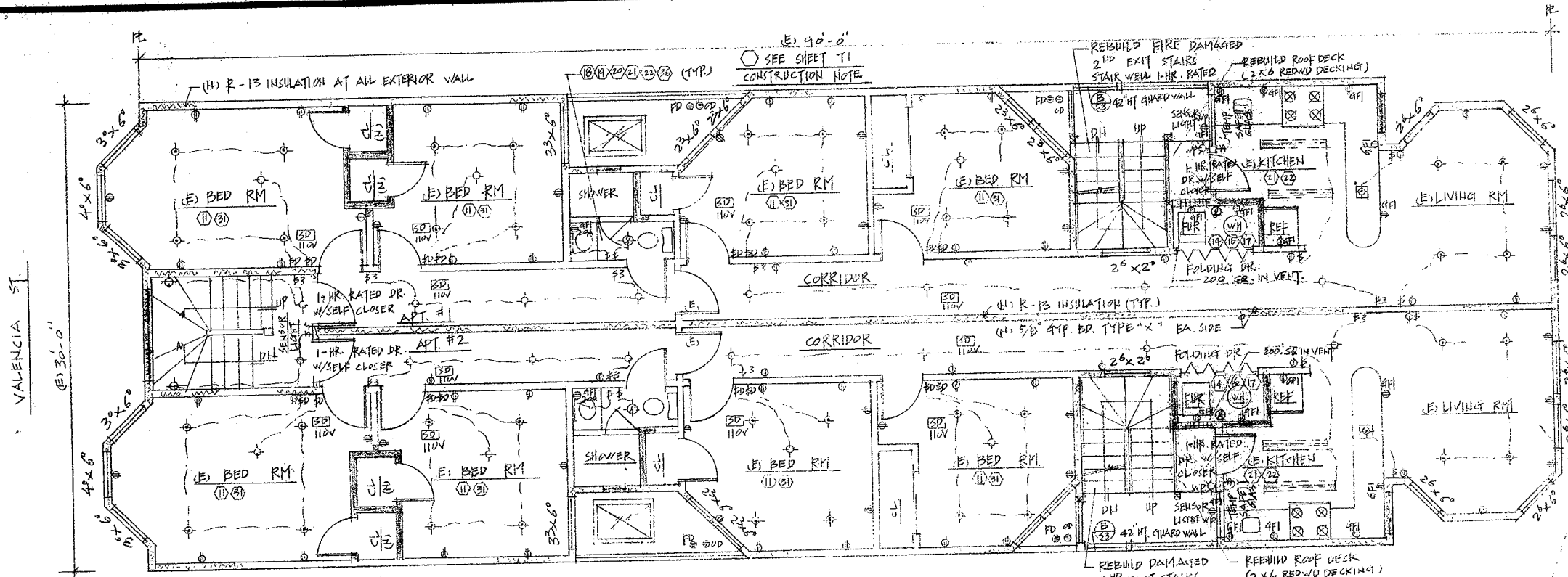
PROPOSED FIRST FLOOR PLAN
 1/4"=1'-0"

Approved
 Approved Planning Dept. Stephen Middlebrook
 08-08-08

A & J Design Associates Inc.
 2328 Taraval Street
 San Francisco, CA 94116
 (415) 682-8683



DRAWN JOYCE CHENG	
CHECKED	
DATE	4-8-08
SCALE	AS SHOWN
JOB NO.	08-09
SHEET	
AJ	
OF 5	SHEETS

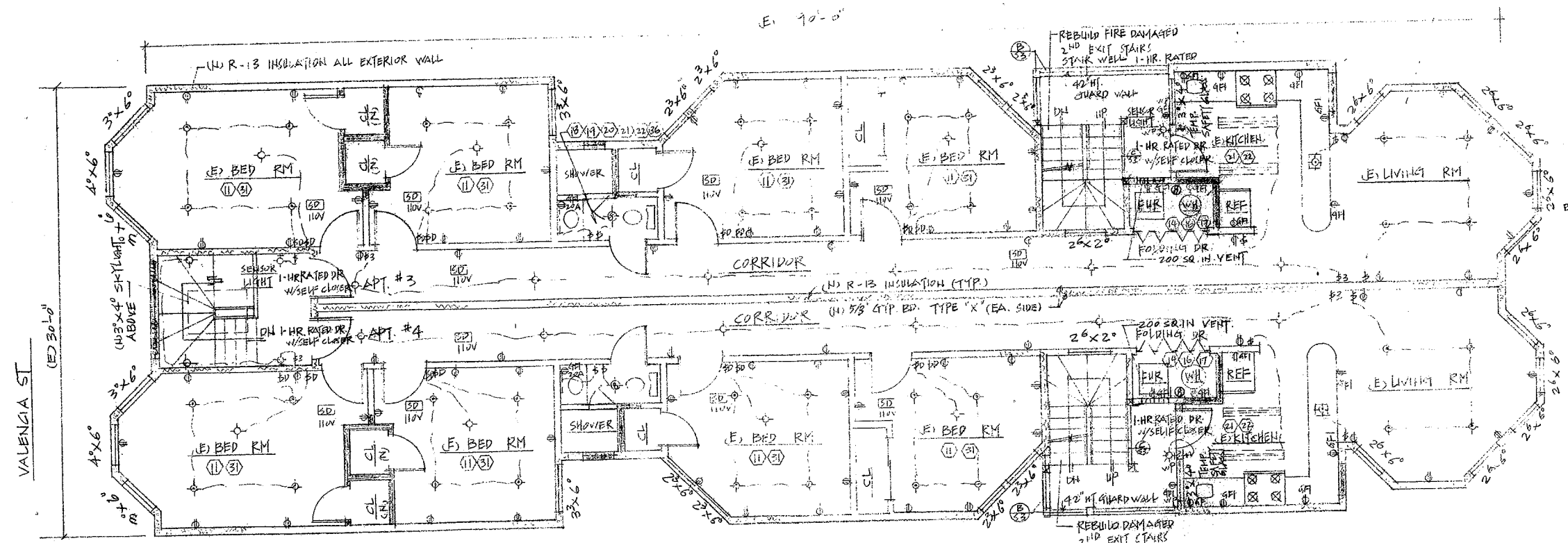


PROPOSED SECOND FLOOR PLAN 1/4" = 1'-0"

NOTES:
FOR ALL FURNACE AND WATER HEATER RM
1-HR. RATED WALLS AND CEILING.
PROVIDE 2-12"X12" VENT. TOP AND BOTTOM W/ INSECT SCREEN. FLUE PIPE UP TO ROOF.

NOTES (2ND FL & 3RD FL) (1)(10)(11)
REMOVE ALL INTERIOR GYP. BD.
REPLACED W/ 5/8" GIP BD TYPE 'X'
INSULATE ALL EXTERIOR WALL, CEILING.
CHANGE ALL WINDOWS TO DOUBLE GLAZED
WINDOWS W/ 0.042 VINYL FRAME WINDOWS
TEMP. SAFETY HANDLE
SIZE TO MATCH W/ (E) 1" P
REPLACE ALL ELECTRICAL AND
PLUMBING SYSTEM.

APPROVED
Dept. of Building Insp.
SEP 21 2008
ACTING DIRECTOR
DEPT. OF BUILDING INSPECTION



PROPOSED THIRD FLOOR PLAN 1/4" = 1'-0"

MERLIN CAYABYAB, DBI
AUG 29 2008

REVISION RECEIVED
AUG 08 2008
DEPT. OF BUILDING INSPECTION
THIS PLAN MEETS THE QUALITY
STANDARD FOR MICROFILMING
ACCEPT

VICTOR YEW, DBI
AUG 29 2008

REVISIONS	BY

PROPOSED 2ND FL & 3RD FL PLAN
1468 - 1472 VALENCIA ST SF CA
BLOCK - 6551 LOT - 15

A & J Design Associates Inc.
2328 Taraval Street
San Francisco, CA 94116
(415) 662-8663



DRAWN
ANNA CHENG
CHECKED
DATE
4-30-08
SCALE
AS SHOWN
JOB NO.
08-09
SHEET

A4